

# Vector Frame R-01

## VF-R-01

Vector Frame™ is a collection of modern extrusion-based fabric graphic banner displays. Vector Frame is easy to assemble and disassemble and provides your choice of single-sided or double-sided integrated fabric graphic murals.



## features and benefits:

- 50mm silver extrusion frame
- Single or double-sided SEG premium fabric graphics
- Easy assembly
- Comes packaged in one wheeled molded case for transport or storage
- Lifetime hardware warranty against manufacturer defects

## dimensions:

### Hardware

Assembled unit:  
36.3" w x 47.49" h x 19.69" d  
922mm(w) x 1206mm(h) x 500mm(d)

Approximate unit weight:  
18 lbs / 8 kgs

### Shipping

Shipping dimensions:  
1 OCS  
45" l x 19" h x 19" d  
1143mm(l) x 483mm(h) x 483mm(d)

Approximate shipping weight:  
36 lbs / 16 kgs

### Graphic

Refer to related graphic templates for more information.

Visit:  
[www.exhibitors-handbook.com/graphic-templates](http://www.exhibitors-handbook.com/graphic-templates)

## additional information:

Dye-sublimation SEG push-fit fabric

When included in a larger kit, a different packaging solution will be listed to accommodate all contents of the kit. Individual packaging no longer provided.

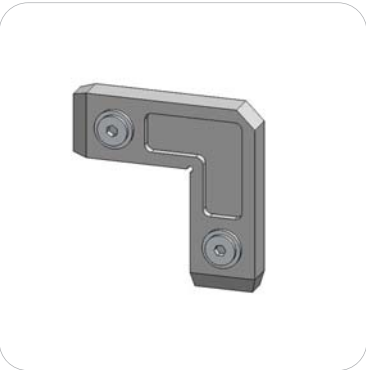
We are continually improving and modifying our product range and reserve the right to vary the specifications without prior notice. All dimensions and weights quoted are approximate and we accept no responsibility for variance. E&OE. See Graphic Templates for graphic bleed specifications.

# Included In Your Kit

Tools, Components,  
& Extrusions



5MM ALLEN-T x1



CB9 x4



PHFC2-900-MCB9-MCB9 x2



PHFC2-1200-MCB9-MCB9 x2



SW-FOOT-500-2 x1

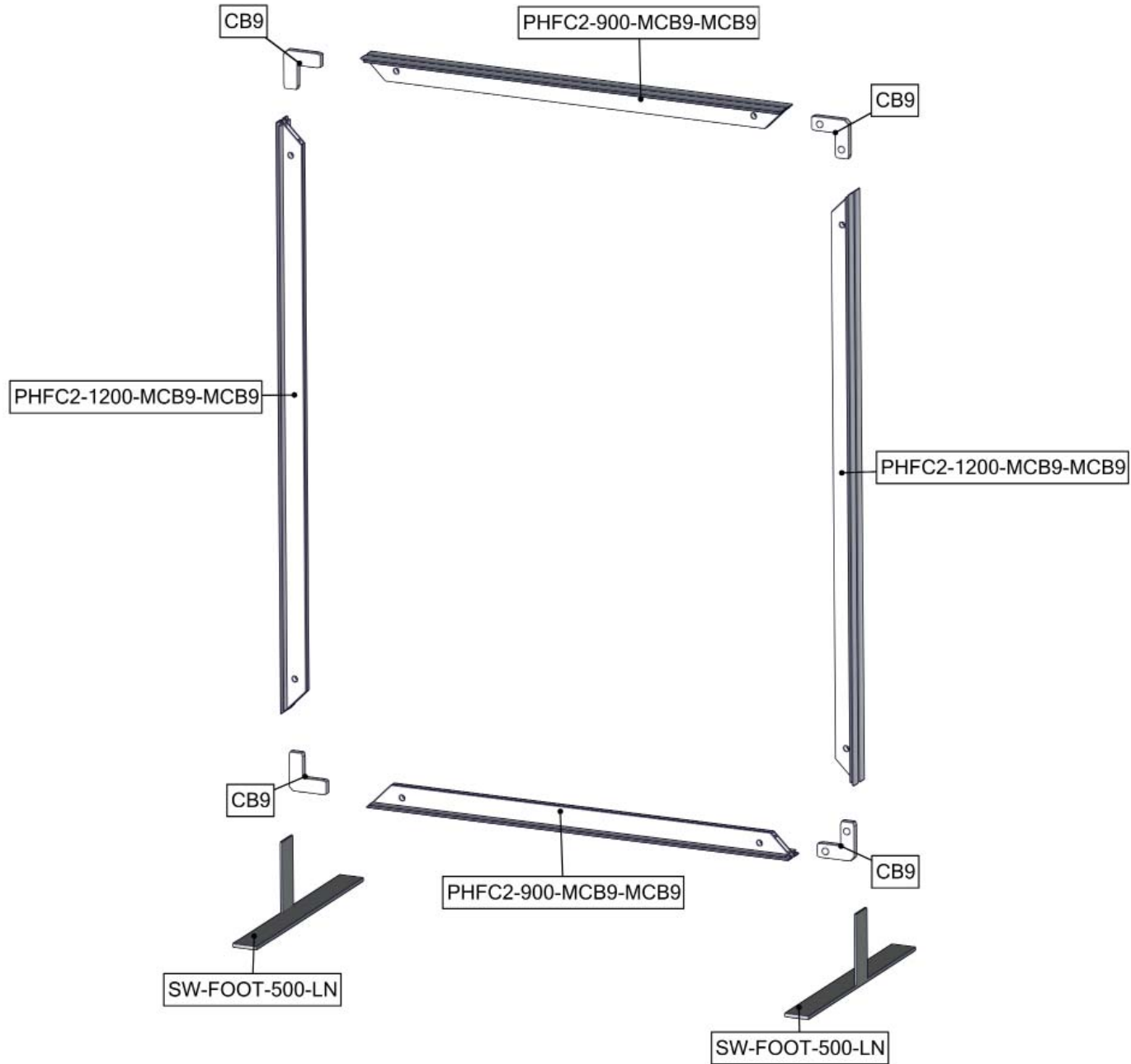
Graphics



VF-R-01-G x1

# Exploded View

VF-R-01



# Connection Methods

## Connection Method 1: IB2



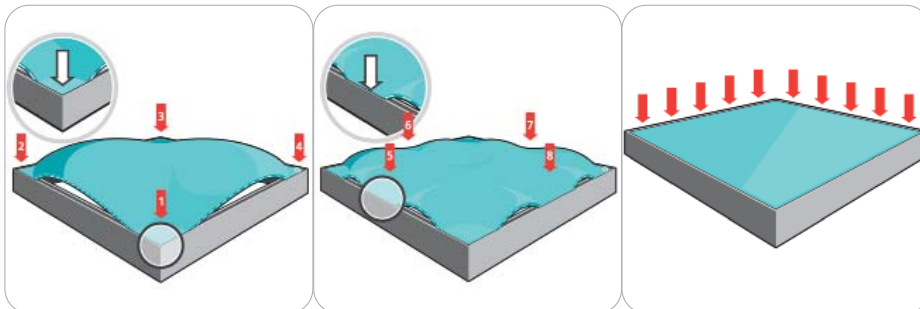
First, insert the in-line connector into the extrusion while holding in the lock button. Then, slide the next extrusion onto the same in-line connector again holding in the lock button. Finally, use the provided allen key to lock the in-line connector in place. Use the allen key tool to turn the lock buttons, make quarter turns and do not over tighten the lock buttons.

## Connection Method 2: CB9



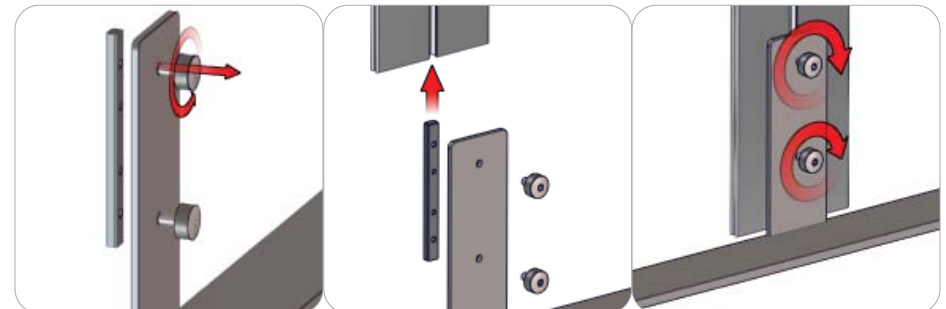
First, insert the corner connector into the extrusion while holding in the lock button. Then, slide the next extrusion onto the same corner connector again holding in the lock button. Finally, use the provided allen key to lock the corner connector in place. Use the allen key tool to press the lock buttons, make quarter turns and do not over tighten the lock buttons.

## Connection Method 3: Graphic Application



First, insert the silicone edge frame corners into the frame graphic channel (points 1 through 4). Second, insert the silicone edge frame sides into the frame graphic channel (points 5 through 8). Third, push the remaining silicone edge fabric into the frame graphic channel. Similar setup is recommended for the opaque liner. To remove these panels, simply pull the loop tag sewn near a corner.

## Connection Method 4: SW-FOOT-300/500/650



First, loosen the thumb screws and channel bars on the stabilizing bases. Do not disassemble them. Second, slide channel bars into the frame channel flush with the base of the frame. Third, tighten the thumb screws and channel bars securing the attachment. Do not over tighten the thumb screws.

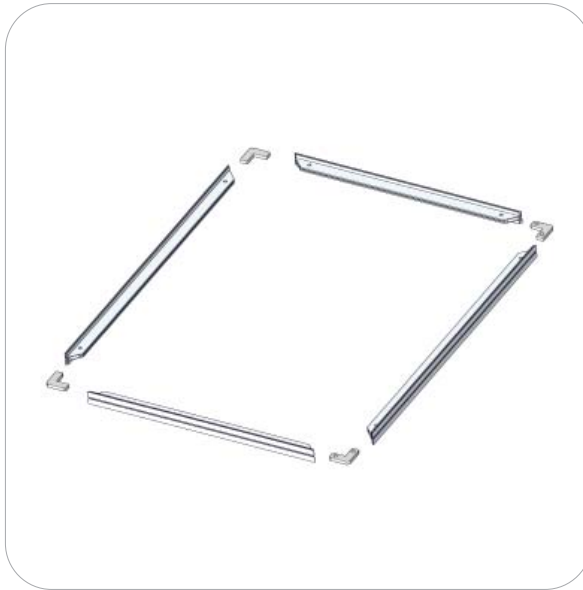
# Kit Assembly

## Step by Step

### Step 1.

Locate the components necessary for assembling the frame. Assemble your frame in order according to the Exploded Diagram.

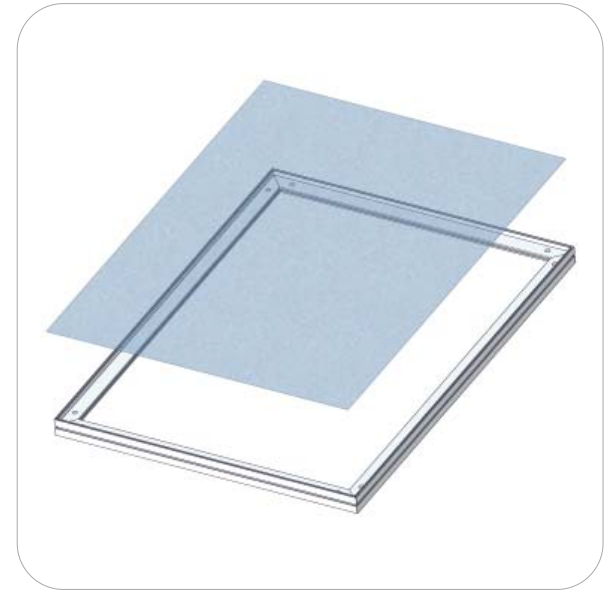
Please reference Connection Method(s) 1 & 2 for more details.



### Step 2.

Apply your push fit silicone edge graphic to either side of your banner frame.

Please reference Connection Method(s) 3 for more details.



### Step 3.

Locate the two stabilizing bases. Attach them to both sides of your frame to allow the frame to stand.

Setup is complete.



# Vector Frame Banners & Light Boxes

Banners:



Vector Frame Banner  
VF-R-01



Vector Frame Banner  
VF-R-02



Vector Frame Banner  
VF-R-03



Vector Frame Banner  
VF-R-04



Vector Frame Banner  
VF-R-05



Vector Frame Banner  
VF-S-01



Vector Frame Banner  
VF-S-02



Vector Frame Banner  
VF-S-03



Vector Frame Banner  
VF-S-04

Lightboxes:



Vector Frame Lightbox  
VF-LF-R-01



Vector Frame Lightbox  
VF-LB-R-02



Vector Frame Lightbox  
VF-LB-R-03



Vector Frame Lightbox  
VF-LB-R-04



Vector Frame Lightbox  
VF-LB-R-05



Vector Frame Lightbox  
VF-LB-S-01



Vector Frame Lightbox  
VF-LB-S-02



Vector Frame Lightbox  
VF-LB-S-03



Vector Frame Lightbox  
VF-LB-S-04