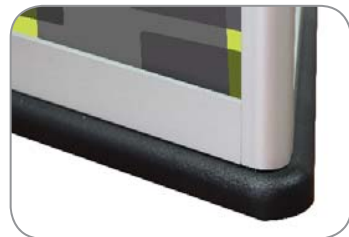


Tri-Tower Deluxe

TRI-TOWER-DLX

Maximize your messaging in any lobby, entryway, at any event or tradeshow with a versatile triangular display tower. The Tri-Tower Deluxe is a free-standing triangular display tower featuring durable aluminum extrusion construction coupled with rigid graphic infill panels. The convenient sliding cam locks make graphic changes quick and easy. It features a heavy-duty laminated foot plate.



features and benefits:

- Free-standing triangular display tower
- Durable aluminum extrusion construction coupled with rigid graphic infill panels
- Sliding cam locks for quick and easy graphic changes
- Heavy-duty laminated foot plate
- One year limited hardware warranty against manufacturer defects
- Optional Internal Lighting and Translucent PETG Graphics Upgrade

dimensions:

Hardware	Graphic
<p>Assembled unit: 26.75" w x 73.375" h x 23.16" d 680mm(w) x 1864mm(h) x 589mm(d)</p>	<p>Refer to related graphic template for more information.</p> <p>Visit: www.exhibitors-handbook.com/graphic-templates</p>
Shipping	additional information:
<p>Shipping dimensions: Hardware + Graphics (rigid graphics): One box: 73.625" l x 32" h x 5" d 1870mm(l) x 813mm(h) x 127mm(d)</p> <p>Hardware Only (comes in two boxes): Box 1: 29.5" l x 24.5" h x 3.875" d 750mm(l) x 623mm(h) x 99mm(d)</p> <p>Box 2: 72.5" l x 1.375" h x 4.25" d 1842mm(l) x 35mm(h) x 108mm(d)</p> <p>Shipping weight: Hardware + Graphics (rigid graphics): One box: 59 lbs / 27 kgs</p> <p>Hardware Only (comes in two boxes): Box 1: 10 lbs / 5 kgs Box 2: 8 lbs / 4 kgs</p>	<p>Graphic material: 6mm Sintra Graphic</p> <p>Optional Internal Lighting Upgrade Kits: TRI-TDK-LK, Lighting Hardware Kit (Includes Power Cords and Connectors)</p> <p>TRI-TOWER-DLX-BL-G, 6MM Translucent PETG Graphics Kit (Includes 3 Printed Panels)</p>

We are continually improving and modifying our product range and reserve the right to vary the specifications without prior notice. All dimensions and weights quoted are approximate and we accept no responsibility for variance. E&OE. See Graphic Templates for graphic bleed specifications.

Included In Your Kit

Tools, Components, & Connectors



5MM ALLEN-T x1



PH-600-S-S x3

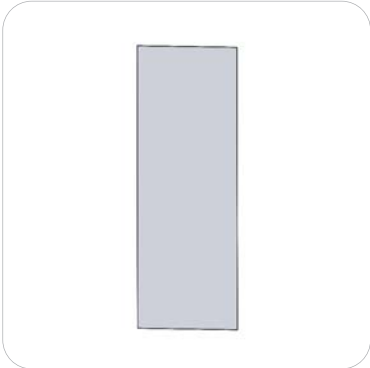


P60R-1829 x3



CTR-TRI-TOWER x1

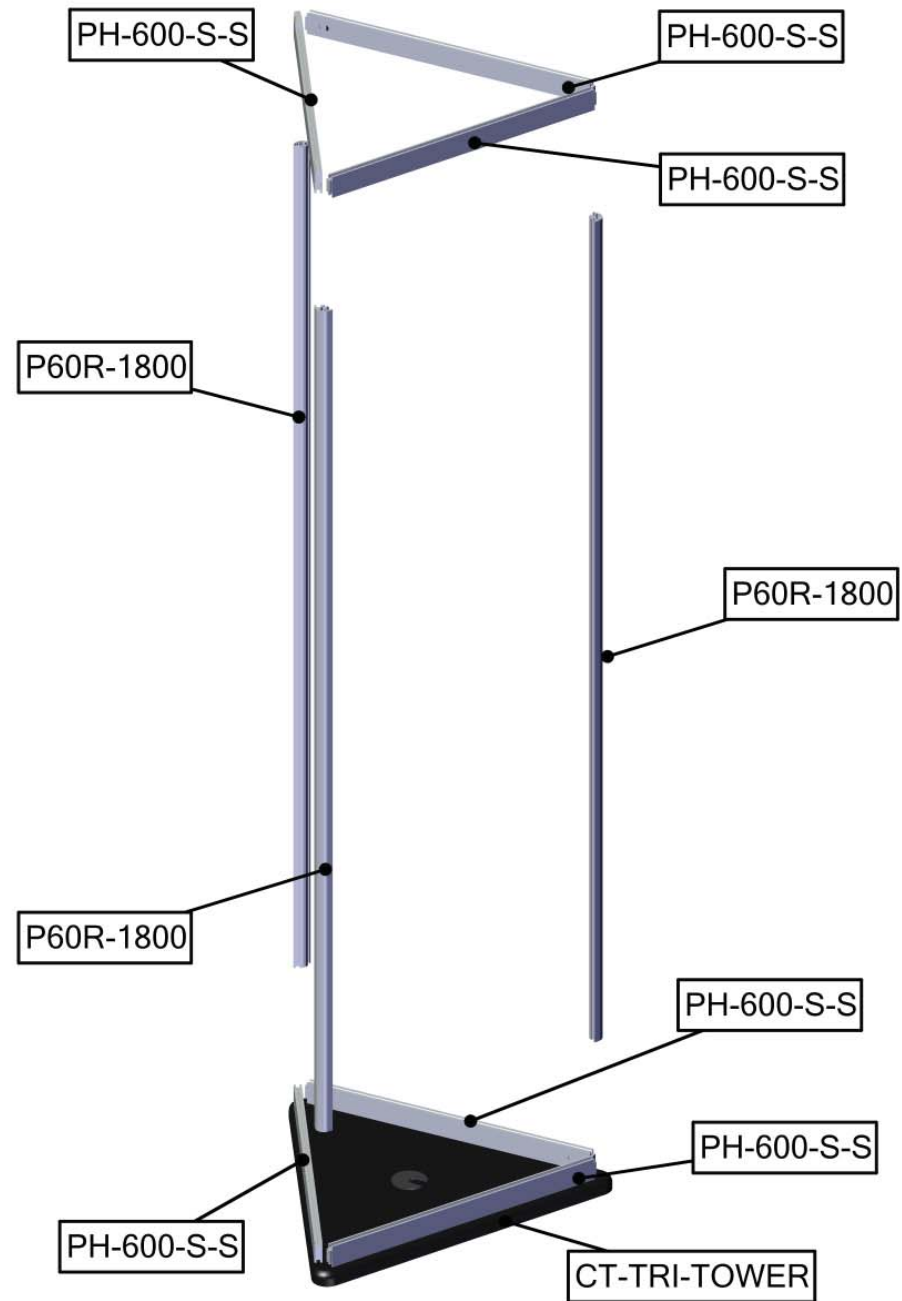
Graphics



TRI-TOWER-DLX-G x3

Exploded View

TRI-TOWER-DLX

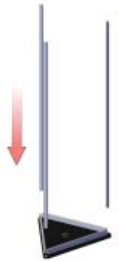


Kit Assembly

Step by Step

Step 1.

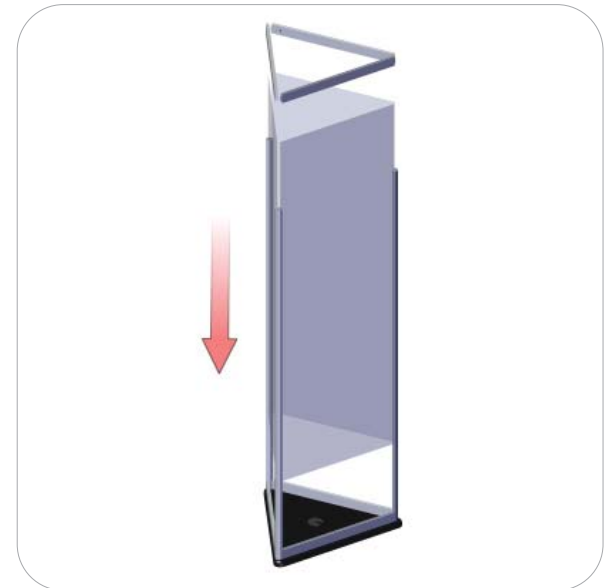
Lock P60R extrusions to base using the allen key as shown.



Step 2.

Slide the 3 graphic panels down into the P60R extrusions.

Slide the three PH-600-S-S pieces over the graphic edges and lock them to the P60R sides using the allen key.



Step 3.

Assembly complete and ready to display.

